



NexusLED Green Technology Sdn Bhd

6, Jalan Sri Sulong Selatan,
Taman Industri Sri Sulong,
83000 Batu Pahat, Johor, Malaysia.
T +607 4102 159 F +607 4102 206
E info@nexusled.com

www.nexusled.com

SLF-040-PN1/XX

Model Name Structure

S	Product Type
L	
F	Model
0	
4	System Wattage
0	
P	
N	Lens Type
1	
X	
X	Version



LED SLF HIGH POWER STREETLIGHTS

SLF500 Series



Products Manufactured by NexusLED Green Technology Sdn Bhd

Solariis™

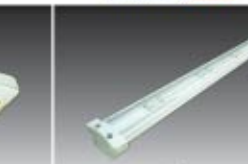
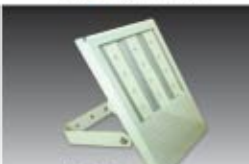
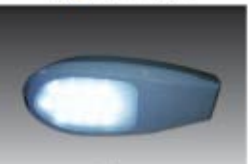
Solariis™

Solariis™

Solariis™

Solariis™

NexusLED®



LED Low Bay

LED Street Light

LED Flood Light

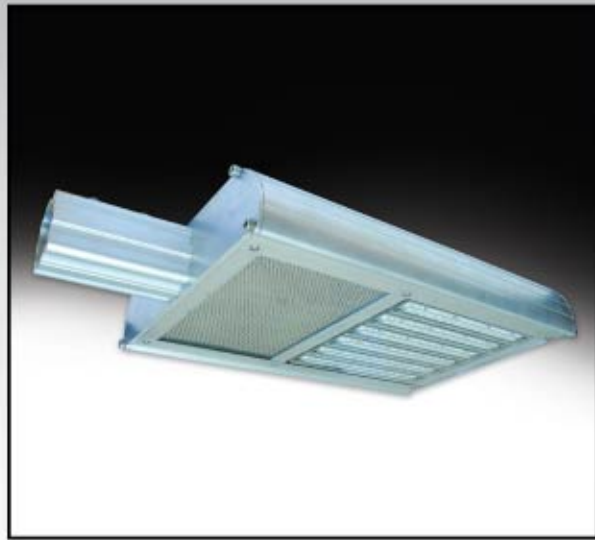
LED Spot Down Light

LED Walkway Light

LED Freezer Light

Solariis™
Innovative Ambient Lighting

High Power LED Street Light SLF Series

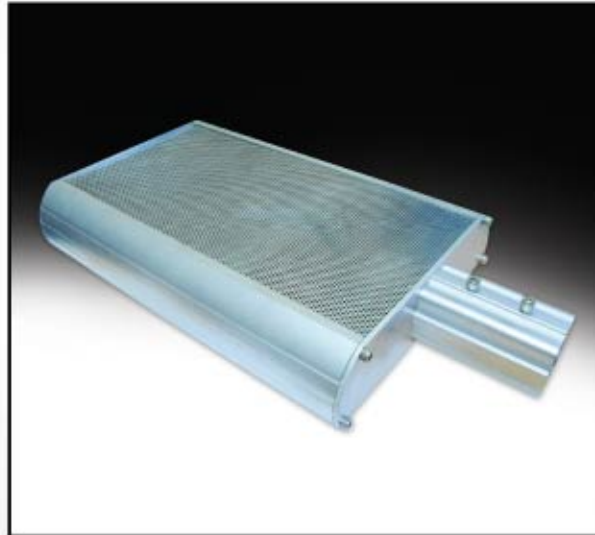


Input Voltage	100~240Vac (+/- 10%)
Power Factor	>0.9
Total Harmonic Distortion	<20%
Class Insulation	Class 2
Operating Temperature (Deg C)	-30 to +50
Color Temperature (CCT)	3000K - 7000K
Color Rendering Index (CRI)	80 Typical
IP Rating	IP66
RoHS Compliant	Yes
CE Compliant	Yes
UL Compliant	Application Pending
Warranty	3 Years

Specifications

No of LED (No of Module)	fwd current at 500mA		
	Power to Leds (W)	System Power (W)	Luminous Flux in (Lumen)
24 (2)	38	45	2640
36 (3)	58	68	3960
48 (4)	77	90	5280
60 (5)	96	113	6600
72 (6)	115	136	7920
84 (7)	134	158	9240
96 (8)	154	181	10560

Color on Lumen Multiplier	
CCT Lumen Multiplier	
6500K	1.00
4300K	0.80
3500K	0.75



Advantages

- Efficiency** • Produce more light per watt than incandescent bulbs.
- Color** • Emit light of an intended color without the use of color filter that traditional lighting methods require. Light illumination with CRI 80 offers true daylight.
- Dimming** • Easily be dimmed either by Pulse-width modulation or lowering the forward current.
- Cool Light** • Radiate very little heat in the form of IR that can cause damage to sensitive objects or fabrics.
- Lifespan** • Have relatively long useful life and estimated more than 50,000 hours. Reduce maintenance costs and eliminates work at elevated height.
- Shock Resistance** • LEDs, being solid-state components, are difficult to damage with external shock, unlike incandescent bulbs which are fragile.
- Focus** • The solid package of the LED is designed to focus its light. Incandescent source often require an external reflector to collect light and direct it in a usable manner.

Toxicity • LEDs do not contain harmful mercury, unlike incandescent bulbs. No disposal cost.

Dark Skies Friendly • Emit directional light, more control on the unit lights. This makes for easier compliance with the Dark Skies Initiative, which aims to reduce light pollution and its associated wildlife impacts.



Intensity Distribution Curves

